



**SELVIN**  
Metal Products



 [www.selvinmetal.com](http://www.selvinmetal.com)

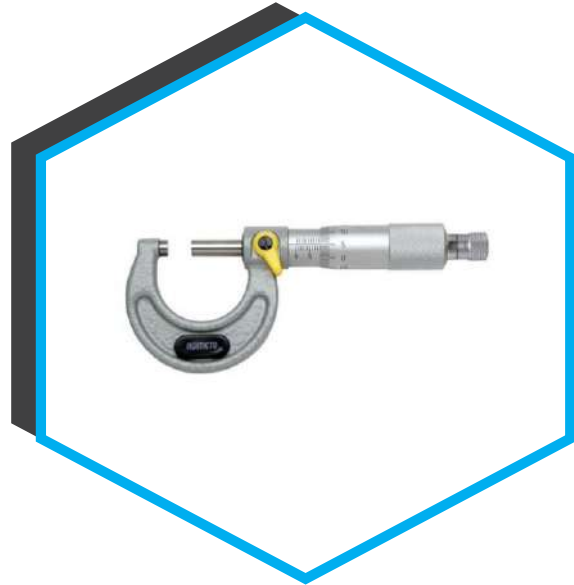
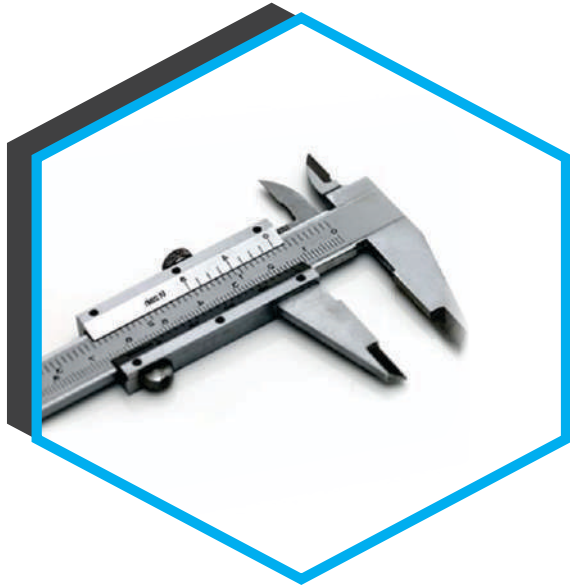
 [info@selvinmetal.com](mailto:info@selvinmetal.com)



## ● About Selvin Metal Products

**Selvin Metal Products** Established in the year 1995, We “**Selvin Metal Products**” are a dependable and famous Manufacturer of a broad range of Brass Electrical Parts, Brass Fasteners, Brass Plug Pin & Sockets, Brass Switchgear Parts, Brass Terminal Blocks, Brass Male Female Bush, Brass Strip Connectors, Brass Spaces/Stand Off, Brass Moulding Inserts, Brass Turned Components, Brass Electronics Parts, etc. We are a Proprietorship company, which is located in Jamnagar (Gujarat, India). We provide these products in diverse specifications to attain the complete satisfaction of the clients. Further, our strong logistic support makes sure that these products are delivered within the promised time-frame.

- **Qualitative range of products**
- **Highly experienced professionals**
- **Wide distribution network**



Our extensive experience allows offering sound technical support services, from design advancements to testing and commissioning of the product. Due to strict quality control procedures our customers are ensured that requirements are met accurately and consistently . The quality control department is equipped with all the necessary testing equipment, used by a technically qualified team. Quality control forms an integral part at every stage right from receipt of raw materials to delivery of finished goods. Various tests like salt spray tests, acetone rub tests, pencil hardness tests, life cycle tests, etc. are carried out to make sure our products can measure up to international standards. **Selvin Metal Products** excellence is not an exception but a prevailing attitude.

Brass Electrical Parts



SMP - EL01



SMP - EL02



SMP - EL03



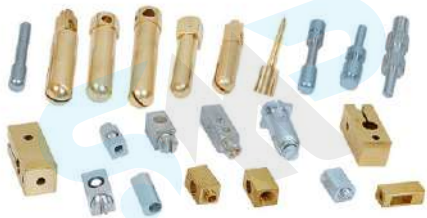
SMP - EL04



SMP - EL05



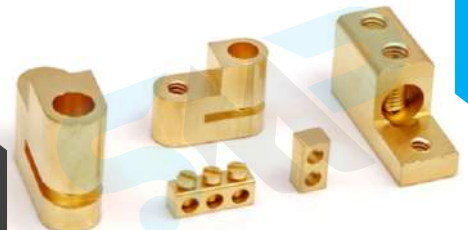
SMP - EL06



SMP - EL07



SMP - EL08



SMP - EL09

Brass Fasteners



SMP - F01



SMP - F02



SMP - F03



SMP - F04



SMP - F05



SMP - F06



SMP - F07



SMP - F08



SMP - F09

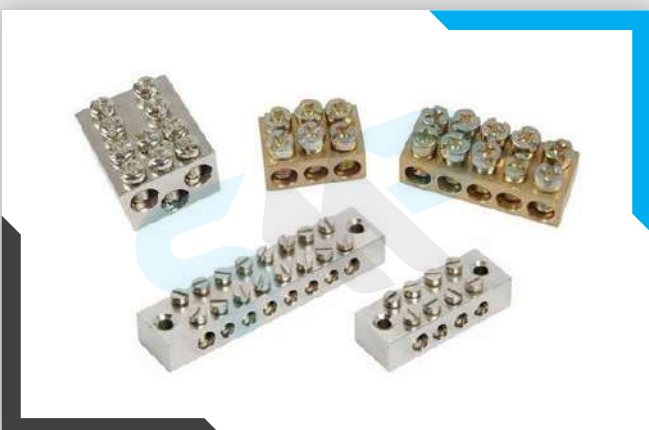
**Brass Plug Pin & Sockets**



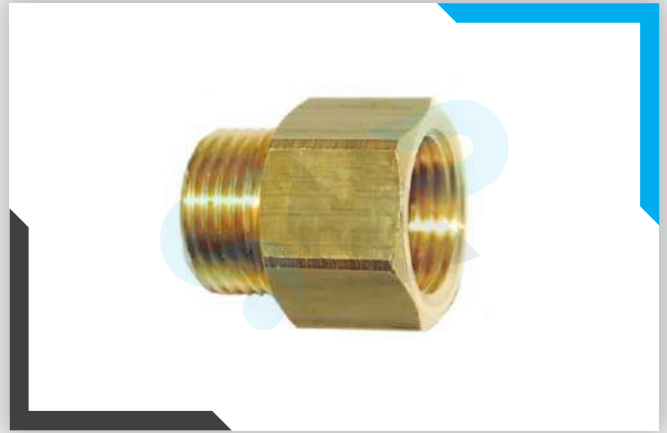
**Brass Switchgear Parts**



**Brass Terminal Blocks**



**Brass Male Female Bush**



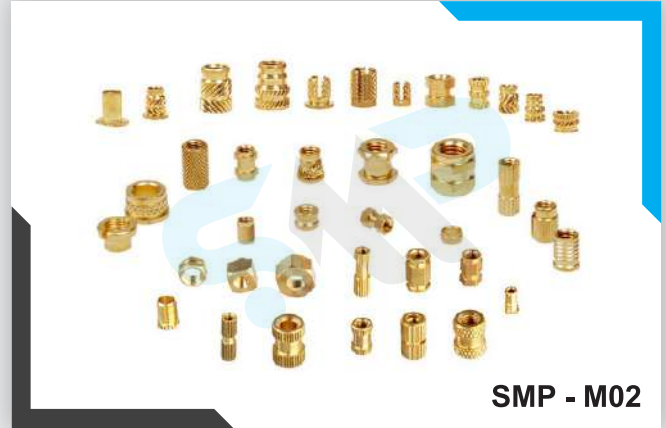
**Brass Strip Connectors**



**Brass Spacers / Stand Off**



Brass Moulding Inserts





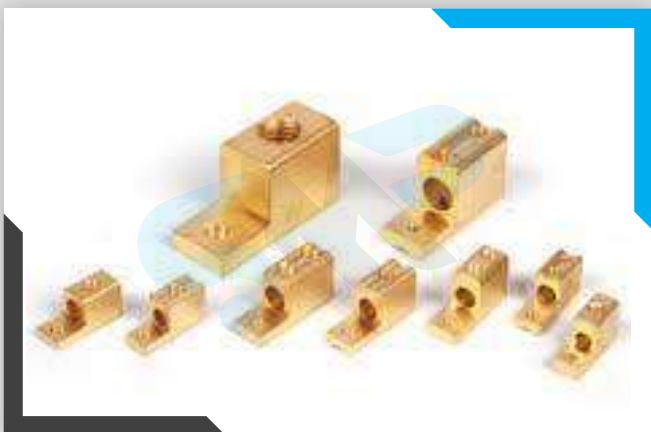
**Brass Turned Components**



**Brass PCB Terminals**



**Brass HRC Fuse Contacts**



**N Connectors**



SMP - N01



SMP - N02



SMP - N03



SMP - N04



SMP - N05



SMP - N06



SMP - N07



SMP - N08



SMP - N09

TNC Connectors



SMP - TNC01



SMP - TNC02



SMP - TNC03



SMP - TNC04



SMP - TNC05



SMP - TNC06



SMP - TNC07



SMP - TNC08



SMP - TNC09

UHF Connectors



SMP - UHF01



SMP - UHF02



SMP - UHF03



SMP - UHF04



SMP - UHF05



SMP - UHF06



SMP - UHF07



SMP - UHF08



SMP - UHF09

**BNC Connectors**



SMP - BNC01



SMP - BNC02



SMP - BNC03



SMP - BNC04



SMP - BNC05



SMP - BNC06



SMP - BNC07



SMP - BNC08



SMP - BNC09

F Connectors



SMP - F01



SMP - F02



SMP - F03



SMP - F04



SMP - F05



SMP - F06



SMP - F07



SMP - F08



SMP - F09

Antena



Banana Plugs



Brass Components



Brass Sensor Proximity



RCA



Interseries Adaptor









**SELVIN**  
Metal Products



Shed No. 29, Near Vinayak Cold Storage  
Sankar Tekri Udhyog Nagar,  
Jamnagar - 361004, Gujarat (INDIA).



**+91 98796 78248**  
**Mr. Shailesh Patel**  
(DIRECTOR)



[www.selvinmetal.com](http://www.selvinmetal.com)



[info@selvinmetal.com](mailto:info@selvinmetal.com)



Design By

**Web World**  
DEVELOPING